

# BENT WRAPPING MESH

Columns are electrowelded structures manufactured with grade 60 corrugated longitudinal rods and grade 50 smooth stirrups, all cold rolled.

## USES

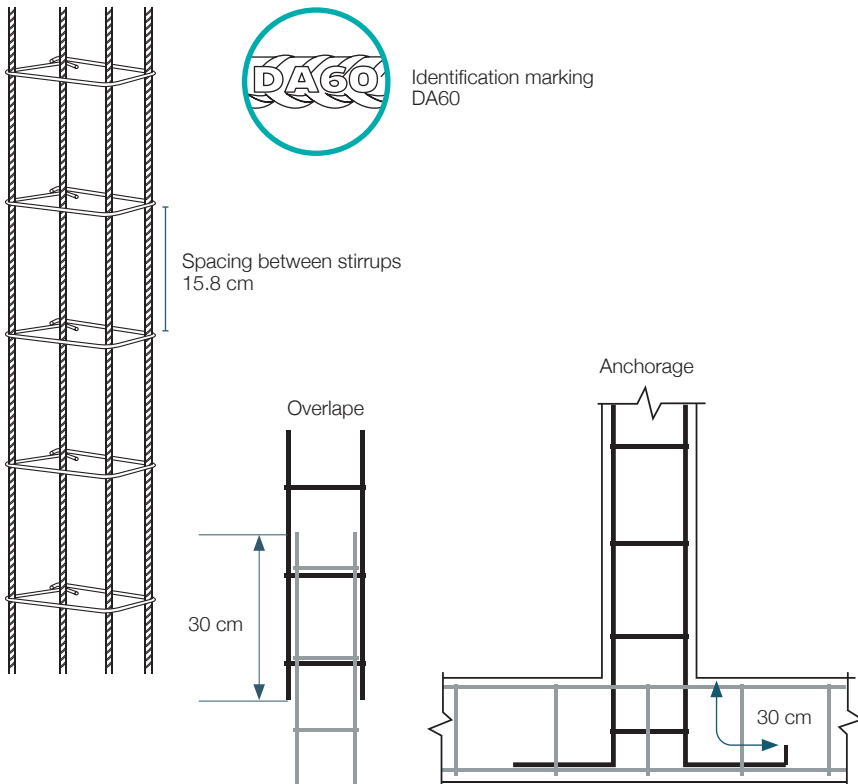
- Equipped with columns and structural beams
- Wall confinement
- Reinforcement in slabs

## CHARACTERISTICS

- In compliance with confined wall standards
- Identification marking DA60
- Easy cut to required size

## ADVANTAGES

- 50% material cost savings versus traditional rod
- 70% reduction in build time against typical columns



## BENT WRAPPING MESH

Code	Design	Presentation	Length m
756	10x10-3	Bent	6.0
757	12x12-3	Bent	6.0
758	15x15-3	Bent	6.0
784	12x12-4	Bent	6.0
787	12x20-4	Bent	6.0
780	15x15-4	Bent	6.0
781	15x20-4	Bent	6.0
782	15x25-4	Bent	6.0
783	15x30-4	Bent	6.0

## COLUMN SPECIFICATIONS

Rods Grade 60 Minimum tensile strength	7,000 kg/cm <sup>2</sup>
Rods Grade 50 Minimum tensile strength	5,700 kg/cm <sup>2</sup>
Minimum elongation at break Grade 50	6% in 10 Ø
Minimum elongation at break Grade 60	6% in 10 Ø

The Deacero Electrowelded Bent wrapping Mesh can be cut and overlapped to adapt to any size of element that is required to be reinforced.

MANUFACTURING STANDARDS: ACI 318

To buy this product write to us at: [sales@ingetek.us](mailto:sales@ingetek.us)  
[www.ingetek.us](http://www.ingetek.us)